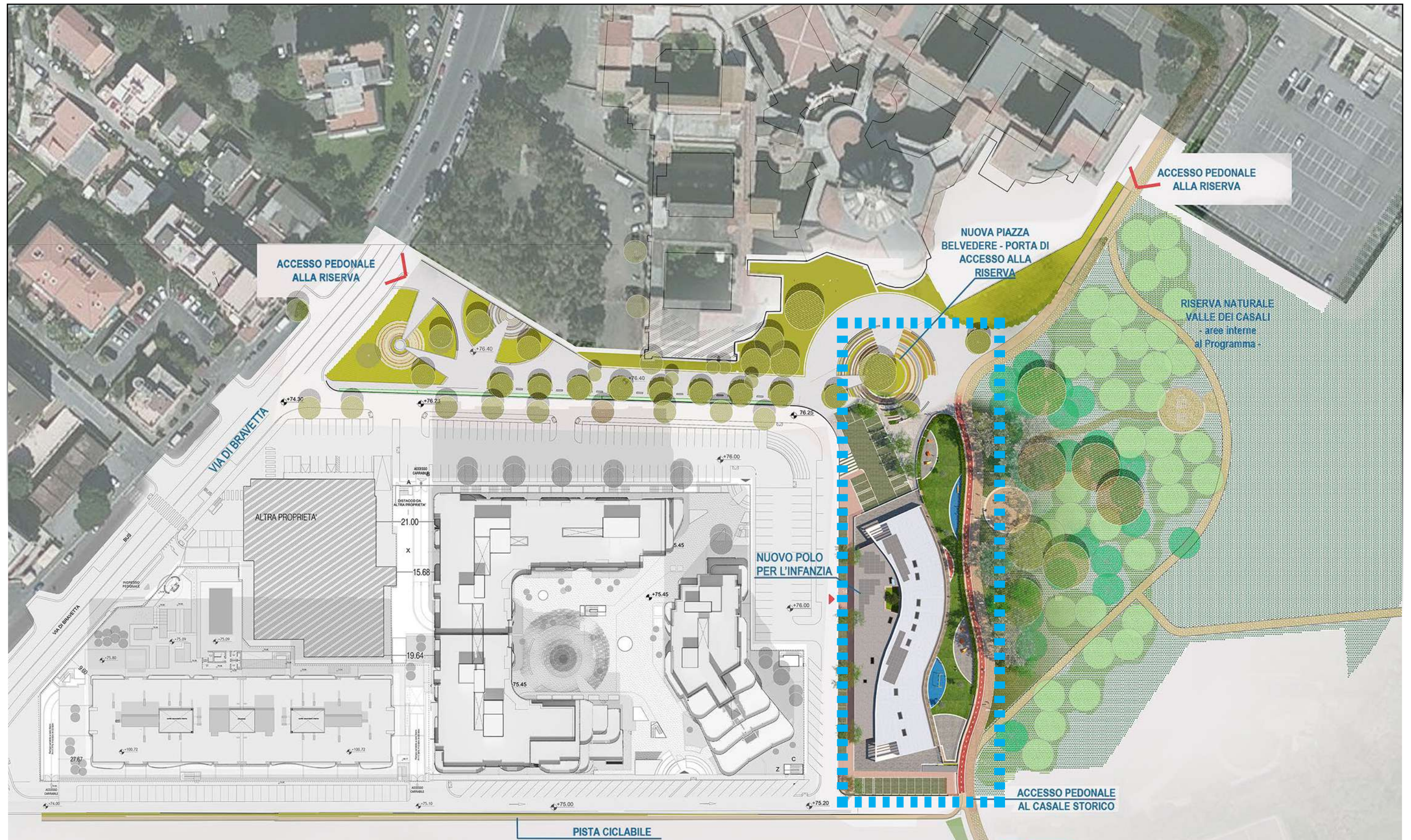


RIGENERAZIONE "EX RESIDENCE ROMA"



POLO PER L'INFANZIA E PIAZZA BELVEDERE

PLANIVOLUMETRICO GENERALE



PIANTA PIANO TERRA





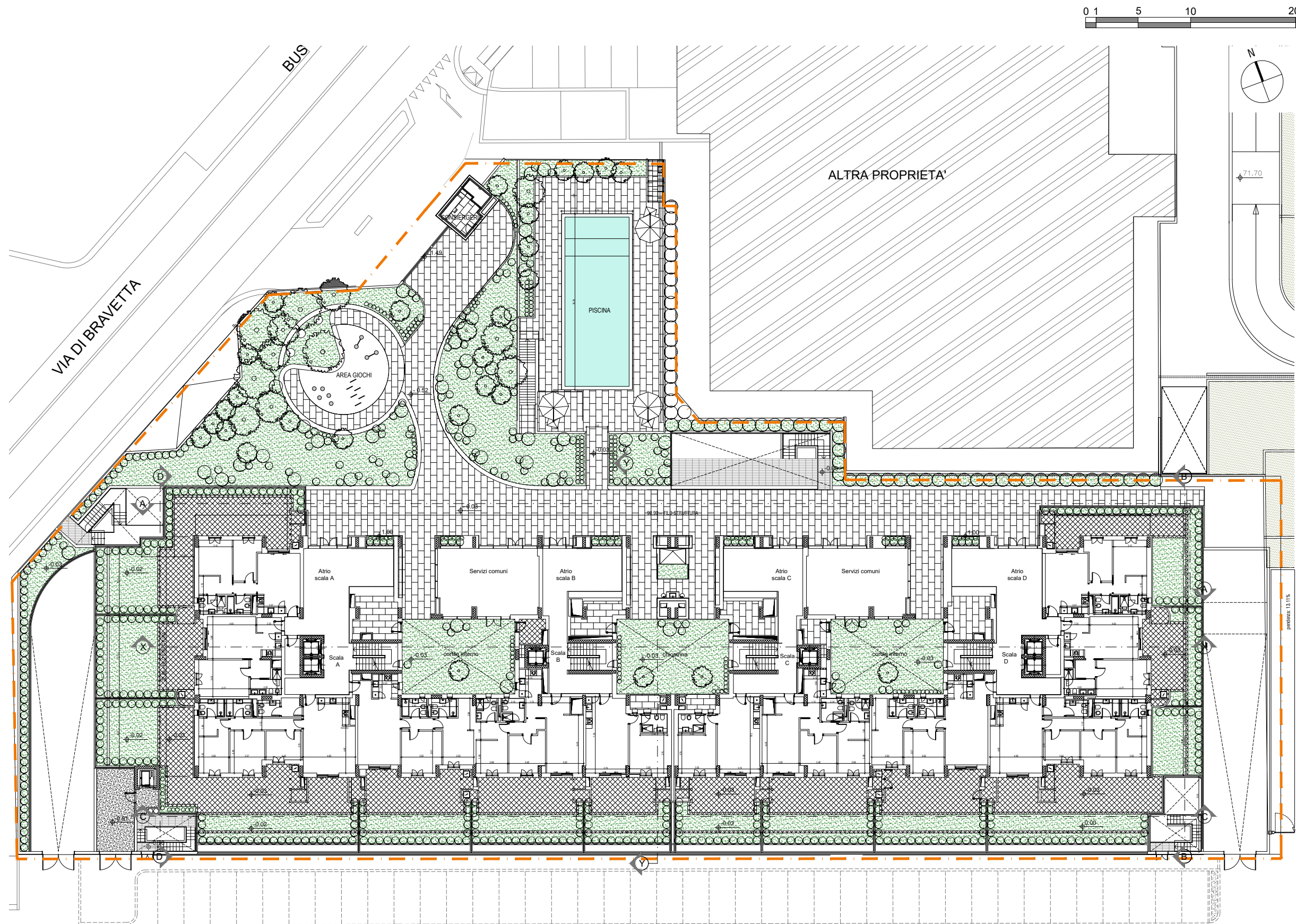


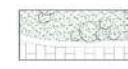


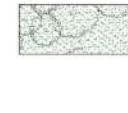




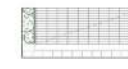









PIANTA PIANO TERRA



-  Sedute in blocchi modulari monolitici in granito o pietra
-  Prato irrigato
-  Piscina con delimitazioni in lastre di travertino
-  Nuove alberature tot n.16 di cui :
n.6 *Acer campestre*
n.5 *Fraxinus ornus*
n.5 *Sorbus aria*
-  Piantumazione nuovi arbusti tot n.10 di cui :
n.4 *Pistacia lentiscus*
n.4 *Phillyrea angustifolia*
n.2 *Arbutus unedo*
-  Spazi ad uso comune in elementi di basaltina o leucite
-  Prato irriguo con aiuole
-  Muri divisori delle pertinenza con elementi metallici tubolari
-  Griglia di aerazione per la ventilazione dei parcheggi
-  Guardiola per sorveglianza e controllo accessi
-  Area giochi pavimentata
-  Spazi privati interni in gres ceramico e verde di pertinenza

- - - - - Sagoma di massimo ingombro
- - - - - Perimetro del comparto fondiario di pertinenza



PROSPETTI

KEYPLAN

PROSPETTO A



PROSPETTO B



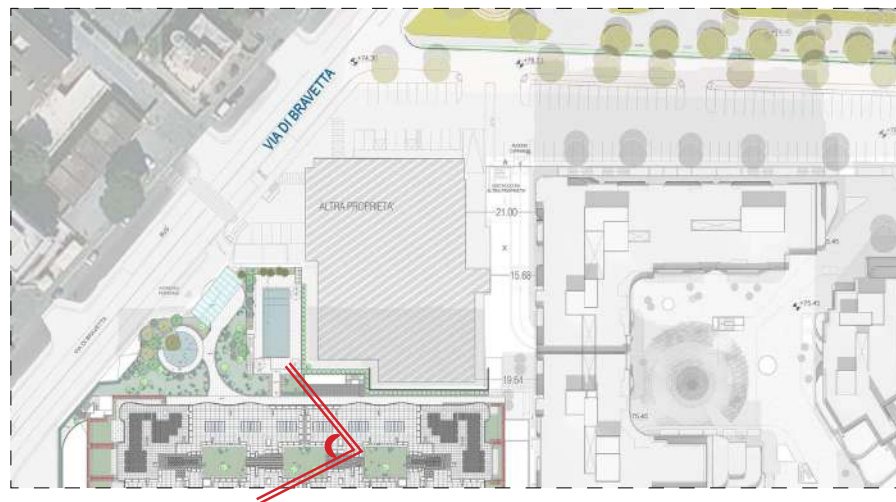
PROSPETTO D

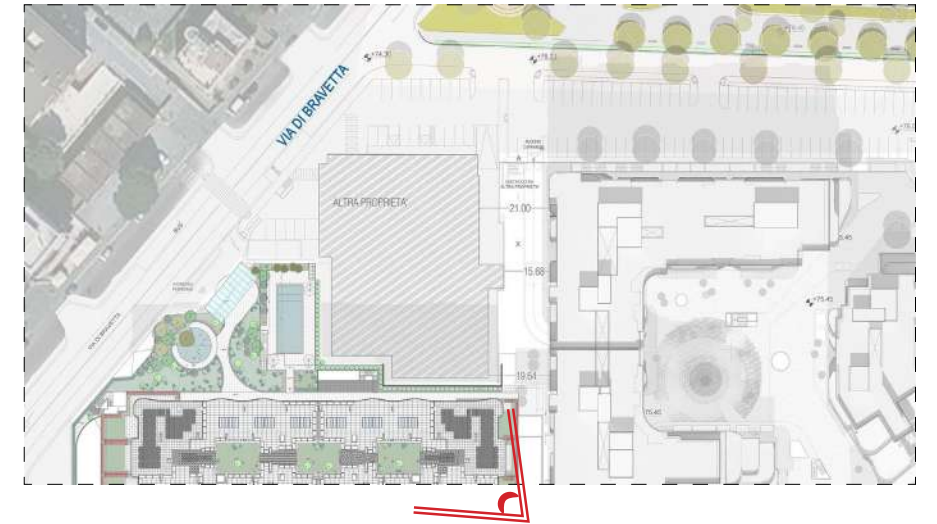


PROSPETTO A



FOTOINSERIMENTI





SUB COMPARTO "R1"

PLANIVOLUMETRICO GENERALE

